

LAXONE-SI ENGINEERING



- Population: 18 032 473 habitants (Source: Agence Nationale de la Statistique et de la Démographie)
- Puissance installée totale : 1,3 GW (Source : Agence Sénégalaise d'Électrification Rurale)
- Objectif 40% de renouvelable en 2030 (taux actuel 30%)
- Consommation individuelle moyenne d'électricité : 350 kWh par an (Source : Agence Internationale de l'Énergie) à titre de comparaison 2.223 kWh en France
- Taux d'électrification 85% en zone urbaine et 60% en zone rurale



LAXONE-SI ENGINEERING



La modélisation de l'IRENA de 2018 suggère que le Sénégal dispose d'une capacité éolienne (terrestre) potentielle totale de 4,5 GW (IRENA, 2018).

la Banque mondiale estime un potentiel offshore de 45 GW :
13 GW de potentiel fixe et
32 GW de potentiel flottant (DTU et al., 2023)⁵.

Base pour le reste de l'Afrique



LAXONE-SI ENGINEERING

MEMBRE DE
SAFIER INGENIERIE SAS
(PARIS LONDON SHANGHAI DAKAR SPAIN)

COMMUNITY STAFF: all permanent



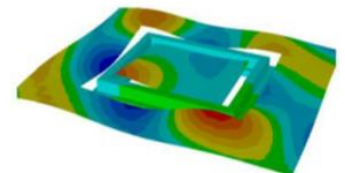
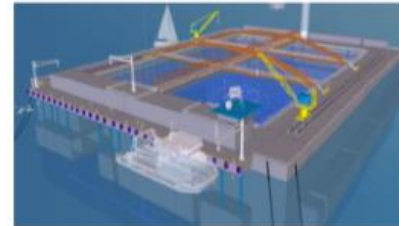
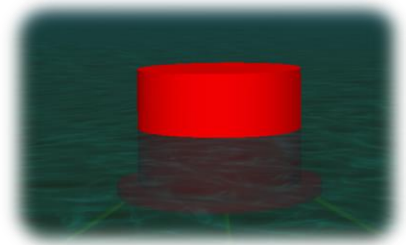
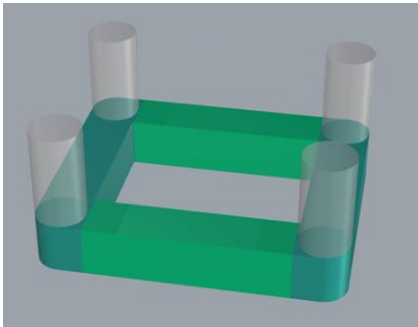
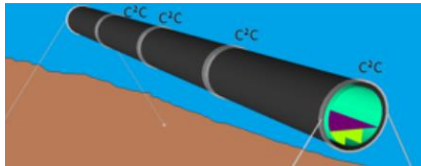
INTEGRATED WORLDWIDE ENGINEERING COMPANY – OVER 30 YEAR EXPERIENCE – Pipeline, Structure, Naval architecture, Hydrodynamics, Mooring anchors, Installation – +100 000 hours engineering per year

ETHIQUE MORALITE TRANSPARENCE TECHNICITE



Engineering solutions for renewables at ports

NO SPACE
ENVIRONMENTAL
RISING SEA WATER



SAFIER INGENIERIE sas PATENTED INNOVATIVE
INDUSTRIAL ECONOMIC SAFE SOLUTIONS



FOWT needs in the future

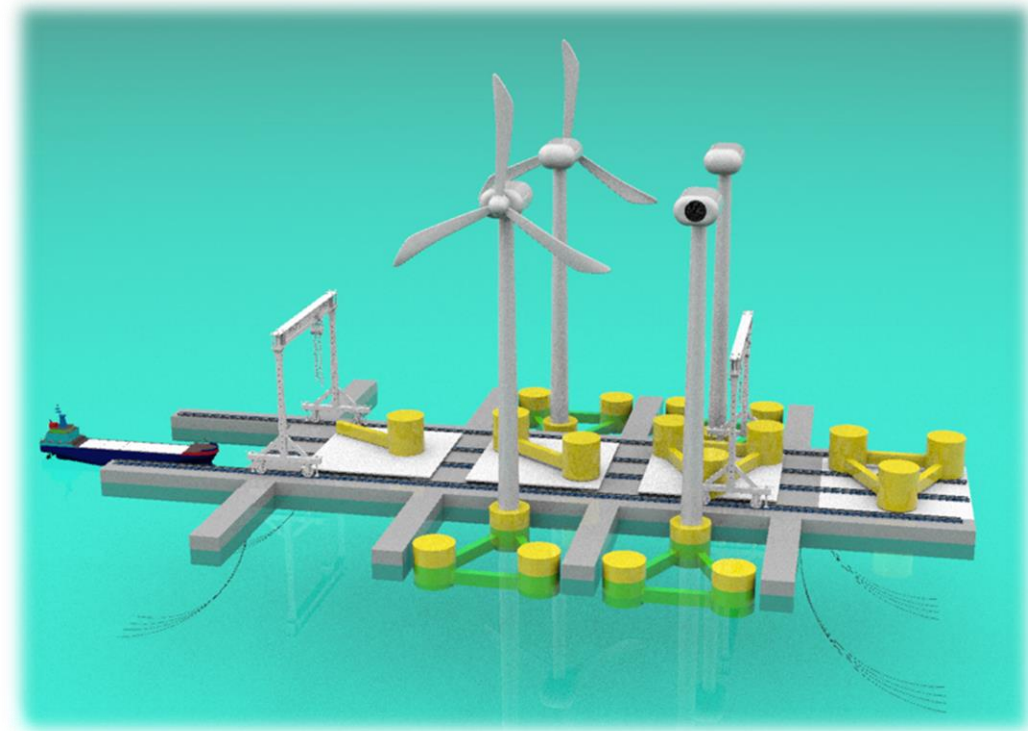


SAFIER INGENIERIE sas PATENTED INNOVATIVE
INDUSTRIAL ECONOMIC SAFE SOLUTIONS



FOWTs needs in the future

- Objective for 2030:
 - 5-30 GW FOW energy globally
 - 7 GW FOW energy in Europe
 - 60 GW fixed and floating in Europe
- Ports to be modified for logistics requirements
- Floating solutions

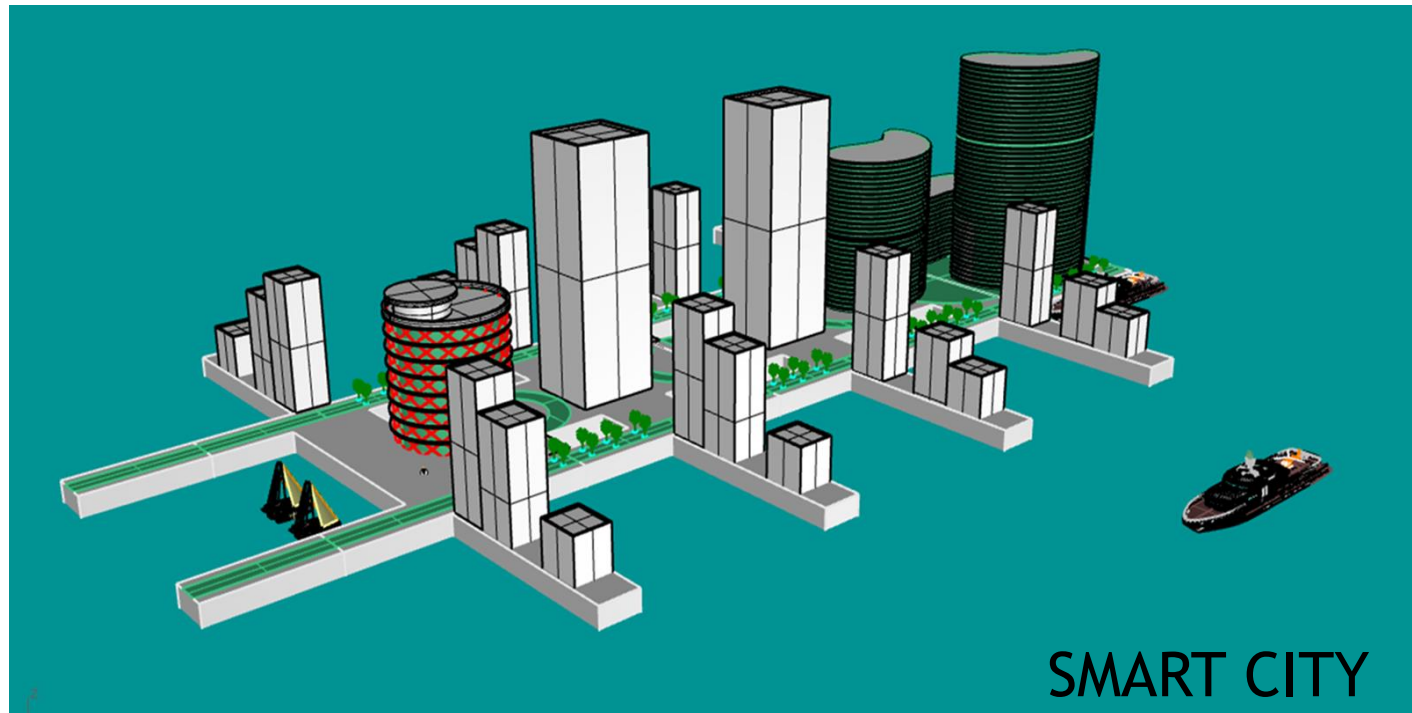


SAFIER INGENIERIE sas PATENTED INNOVATIVE
INDUSTRIAL ECONOMIC SAFE SOLUTIONS

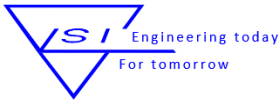


Rising seawater solutions for floating cities

Modular Offshore Platform Assembly Line Floating Offshore Wind Turbine



SAFIER INGENIERIE sas PATENTED INNOVATIVE
INDUSTRIAL ECONOMIC SAFE SOLUTIONS



SAFIER INGENIERIE SAS PARIS LONDON DAKAR SHANGHAI SPAIN

cross-energy Engineering Deeptech Technical solutions consultancy
Community human values company worldwide

SAFIER INGENIERIE SAS is a human values, family-owned, **engineering consultancy** of 60 full-time engineers with permanent employment contracts.

For over 40 years we are serving our clients with our
core values: ethics, morality, technical, transparency, pride in our work.

We have never made any staff redundant; we never subcontract, we never take on temporary staff, thus ensuring the highest human quality environment.

Our engineering team is our company Our company is our engineering team.

STRUCTURAL CIVIL ENGINEERING NAVAL ARCHITECTURE MOORINGS ANCHORS FOUNDATIONS is our EXPERTISE

cross-energy engineering technical solutions consultancy



Confidential _ SISAS property

**SAFIER INGENIERIE sas PATENTED INNOVATIVE
INDUSTRIAL ECONOMIC SAFE SOLUTIONS**